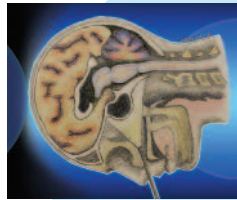




STRITCH
SCHOOL of MEDICINE

Division of Continuing Medical Education
2160 South First Avenue, Bldg. 120, Room 310
Maywood, IL 60153

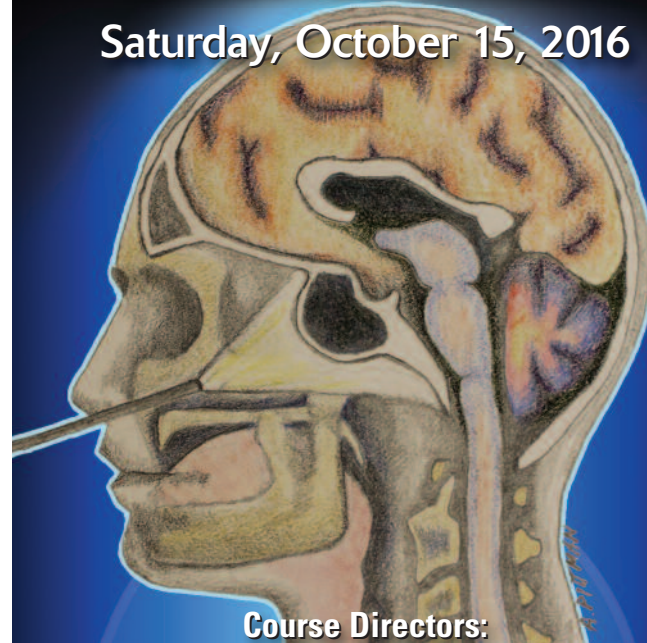


**3RD ANNUAL CHICAGOLAND
ENDOSCOPIC ENDONASAL
SKULL BASE SURGERY:
HANDS-ON COURSE**

Saturday, October 15, 2016

3RD ANNUAL CHICAGOLAND ENDOSCOPIC ENDONASAL SKULL BASE SURGERY: HANDS-ON COURSE

Saturday, October 15, 2016



**Course Directors:
ANAND V. GERMANWALA, MD, FAANS
and CHIRAG PATEL, MD**

**Course Coordinator:
LAUREN NAGLE**

In memory of Tarik F. Ibrahim, MS, MD

Sponsored by:
Loyola University Chicago
Stritch School of Medicine
Division of Continuing Medical Education;
Loyola University Health System
Department of Neurological Surgery and
Department of Otolaryngology – Head and Neck Surgery



STRITCH
SCHOOL of MEDICINE



**LOYOLA UNIVERSITY CHICAGO STRITCH SCHOOL OF MEDICINE
LOYOLA UNIVERSITY HEALTH SYSTEM
FACULTY**

ANAND V. GERMANWALA, MD, FAANS

Associate Professor, Residency Program Director, and Course Director
Department of Neurological Surgery and Otolaryngology
Chief of Neurological Surgery – Edward Hines, Jr., VA Hospital

MONICA O. PATADIA, MD

Assistant Professor
Department of Otolaryngology – Head and Neck Surgery

CHIRAG PATEL, MD

Assistant Professor and Course Co-Director
Department of Otolaryngology – Head and Neck Surgery

VIKRAM C. PRABHU, MD, MS, FACS, FAANS

Professor
Department of Neurological Surgery

JAMES STANKIEWICZ, MD

Professor
Department of Otolaryngology – Head and Neck Surgery

GUEST FACULTY

JOSEPH RAVIV, MD

Clinical Associate Professor
Otolaryngology – Head and Neck Surgery
NorthShore Medical Group
Northbrook, IL

RICKY WONG, MD

Director of Skull Base and Pituitary Surgery
Department of Neurological Surgery
NorthShore Medical Group
Evanston, IL

FACULTY DISCLOSURE

Loyola University Chicago Stritch School of Medicine ensures balance, independence, objectivity and scientific rigor in all educational activities for which CME credit is awarded. Complete disclosure information will be provided to the audience in the printed activity material.

EDUCATIONAL GRANTS/COMMERCIAL SUPPORT

A complete list of commercial interests providing support for this educational activity will be provided to the audience in the printed activity materials.

agenda

Saturday, October 15, 2016

- 6:00 am Registration and Continental Breakfast**
- 6:30 am Welcome and Introduction of Faculty**
Anand V. Germanwala, MD
- 7:00 am Introduction to Endoscopic Endonasal Skull Base Surgery - Basic Principles**
Chirag Patel, MD
- 7:30 am Exposure of the Sella and Suprasellar Region - Basic Anatomy and Techniques**
Monica O. Patadia, MD
- 8:00 am Endoscopic Endonasal Transsellar Approaches**
Vikram Prabhu, MD
- 8:30 am Approaches and Management of Suprasellar Lesions**
Ricky Wong, MD
- 9:00 am Extended Endoscopic Endonasal Approaches**
Anand V. Germanwala, MD
- 9:30 am Break**
- 10:00 am Skull Base Dural Reconstruction**
Joseph Raviv, MD
- 10:30 am Complications**
James Stankiewicz, MD
- 11:00 am Equipment, Instrumentation and Set-up**
Chirag Patel, MD
- 11:30 am Lunch**
- 12:30 pm Live Prosection**
Joseph Raviv, MD and Ricky Wong, MD
- 1:00 pm Cadaveric Dissection**
All Faculty
- 4:30 pm Closing Remarks, Program Evaluation, and Adjournment**
Anand V. Germanwala, MD

program

This program is designed to educate physicians on the role the endoscopic endonasal approach can play in their practice and the ways it can be used to safely treat skull base pathologies via a minimally invasive technique. It will provide participants with more options to safely treat patients and enhance the care they provide to their communities.

curricular goals and objectives

Provide technical teaching, offer practice, and instill confidence in the endoscopic approach as a viable and practical alternative in the daily treatment of appropriate skull base pathology.

Upon completion of this activity, participants should be able to:

- Identify specific pathologies that are appropriate for endoscopic technique.
- Perform the basics of the two-handed endoscopic technique.
- Recognize how to avoid complications but be able to handle the basic ones that arise most commonly.

competencies

This educational event will address the following competencies: patient care, medical knowledge, practice-based learning, interdisciplinary team skills, system-based practice, quality improvement, and information technology skills.

target audience

This intense course and hands-on lab has been designed for neurosurgeons and otolaryngologists who deal with pathology that may potentially be addressed via the endoscopic technique.

accreditation

The Loyola University Chicago, Stritch School of Medicine is accredited by the Accreditation Council for Continuing Medical Education to sponsor continuing medical education for physicians.

The Loyola University Chicago, Stritch School of Medicine designates this live educational activity for a maximum of *8.5 AMA PRA Category 1 Credit(s)*[™]. Physicians should claim only the credit commensurate with the extent of their participation in the activity.

conference location

Loyola University Chicago Stritch School of Medicine
John & Herta Cuneo Center
2160 S. First Avenue
Maywood, IL 60153

special needs

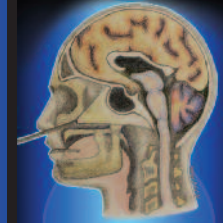
We welcome all registrants to this activity. If you need special accommodations in order to participate, we will try to accommodate your needs. Please submit a written request one month prior to the course to receive service.

additional information

Contact the Division of CME during business hours Monday – Friday at 708 216-3236 or 800 424-4850 or by fax, 708 216-5318. For other CME offerings, please visit our website: <http://ssom.luc.edu/cme/>

registration

**3RD ANNUAL CHICAGOLAND
ENDOSCOPIC ENDONASAL
SKULL BASE SURGERY:
HANDS-ON COURSE**



Saturday, October 15, 2016

SPACE IS LIMITED - REGISTER EARLY

Pre-registration is required for this course and your response is requested no later than **Monday, October 3rd** to secure your reservation and availability of course material for this conference.

Registration fee includes program material, hands-on lab, continental breakfast, and lunch.

Physician registration fee \$300

Registration fee is non-refundable.

Mail completed registration form with payment to:
Loyola University Chicago Stritch School of Medicine
Office of Continuing Medical Education
2160 S. First Ave., Bldg 120, Rm 310, Maywood, IL 60153

To register via email, send complete registration information to kbertuc@luc.edu
You may also phone 708-216-3236 or fax registration to (708) 216-5318

Name _____

Degree (MD, DO, PhD, etc.) _____

Hospital, School, or Other Affiliation _____

Specialty _____

Address _____

City _____ State _____ Zip _____

E-mail address _____

(Your confirmation packet will be e-mailed to this address. Please adjust your settings so you receive e-mails from the luc.edu domain.)

Daytime Phone _____ Fax _____

Select method of payment:

Check made payable to **Loyola University Chicago - CME**

Mastercard Visa Discover American Express

Acct # _____ Exp Date _____

Signature _____

Billing Address _____ Billing Zip Code _____

What do you plan to gain from attending this activity? _____

Identify presentation specifics that will address your needs: _____